

FACT SHEET

MV "PANAGIA" - MV "PANTANAL" - MV "PANGANI"

MV PANAGIA: CALL SIGN: V20Q5 - IMO NO: 9305295
 MV PANTANAL: CALL SIGN: V2PN8 - IMO NO: 9316579
 MV PANGANI: CALL SIGN: ZDHC4 - IMO NO: 9318943

T/C OWNERS: K/S COMBI LIFT - 4220 KORSOER - DENMARK
 PORT OF REGISTRY: ST. JOHNS
 FLAG: ANTIGUA



MAIN PARTICULARS :

CLASS:

GL + 100 A5EG EQUIPPED FOR CARRIAGE OF CONTAINERS AND DANGEROUS CARGO IMO 1.1. MC AUT STRENGTHENED FOR HEAVY CARGO.

BUILDERS:

XINGANG SHIPYARD, TIANJIN YARD NO 328/337-2 – 2004

REGISTER TONNAGE:

| | |
|-------|---------------|
| TYPE | INTERNATIONAL |
| GROSS | 7002 |
| NET | 3375 |

DIMENSIONS:

| | |
|---------------------------|----------|
| LENGTH OVER ALL | 119,80 M |
| LENGTH BETWEEN PP | 113,50 M |
| BREADTH MOULDED | 20,20 M |
| DRAFT FULLY LOADED SUMMER | 7,59 M |

DEAD WEIGHT CAPACITIES:

| | |
|------------------|---------------|
| DEAD WEIGHT A.T. | 7821 MTS |
| DEAD WEIGHT C.C. | ABT. 7200 MTS |

CONTAINER CAPACITIES:

| | |
|--------------------------------|-----|
| TOTAL CAPACITY 20' x 8' x 8'6" | 599 |
| HEREOF: IN CARGO HOLD | 238 |
| ON DECK | 361 |
| CAPACITY WITH AVERAGE 14 TS | 377 |
| REEFER CONTAINERS | 36 |

STACKLOAD:

| | |
|---------|---------------------------------|
| TANKTOP | 100 TS EACH 20' 120 TS EACH 40' |
| DECK | 60 TS EACH 20' 80 TS EACH 40' |

CARGO HOLD:

FITTED FOR DANGEROUS CARGO SOLAS -II-2, REG 54 HOLDS FITTED WITH SMOKE DETECTORS, CO2 SYSTEM, SPRINKLER

HATCHES:

| | |
|-------------|-------------------------------|
| HATCH NO. 1 | 12,63 X 15,15 + 6,22 X 9,94 M |
| HATCH NO. 2 | 52,00 X 16,10 X 10,80 M |
| BOXSHAPED | |

CUBIC CAPACITIES IN HOLDS:

| | |
|------------------------------|-----------|
| WITH TWEEN-DECK HATCH COVERS | 11069 CBM |
|------------------------------|-----------|

CRANES:

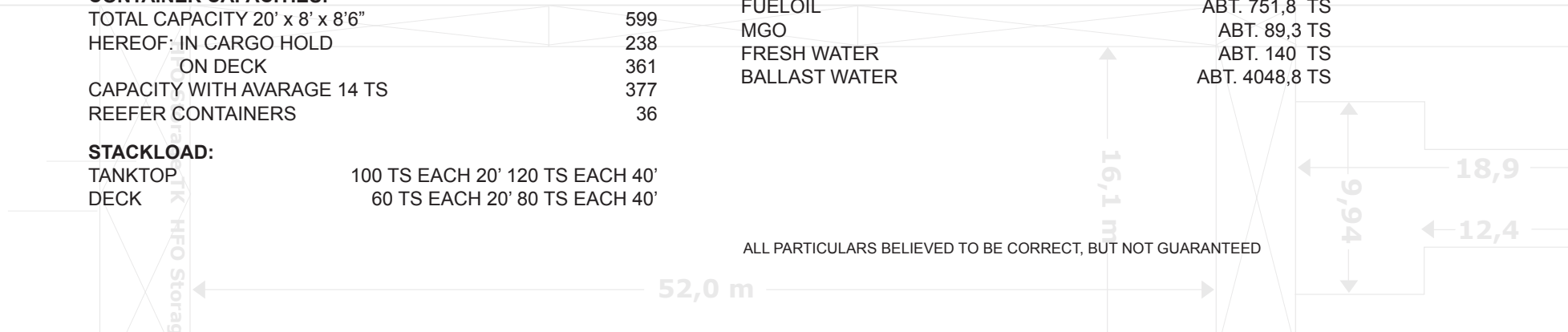
2 ELECTRO HYDRAULIC CRANES PORT SIDE 250 TS / 12 M & 100 TS / 26 M COMBINABLE UP TO 500 TS

DECK STRENGTH:

TANKTOP - STEEL 16,0 TS PER M2
 TWEENDECK – HOLD NO. 1 2,5 TS PER M2
 TWEENDECK – HOLD NO. 2 3,0 TS PER M2
 HATCH COVER 2,5 TS PER M

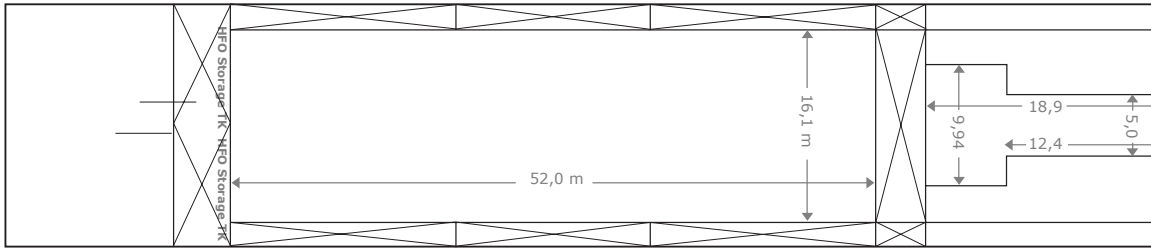
TANK CAPACITIES:

| | |
|---------------|----------------|
| FUELOIL | ABT. 751,8 TS |
| MGO | ABT. 89,3 TS |
| FRESH WATER | ABT. 140 TS |
| BALLAST WATER | ABT. 4048,8 TS |



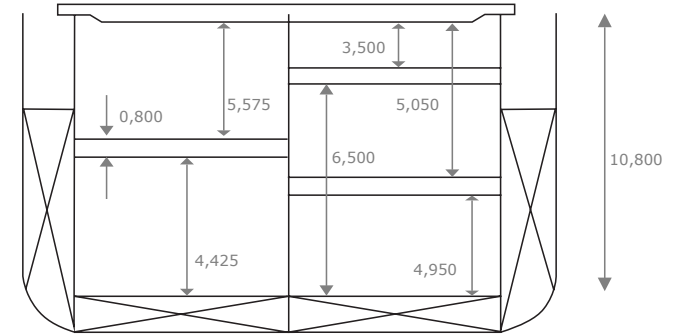
ALL PARTICULARS BELIEVED TO BE CORRECT, BUT NOT GUARANTEED

TANK TOP

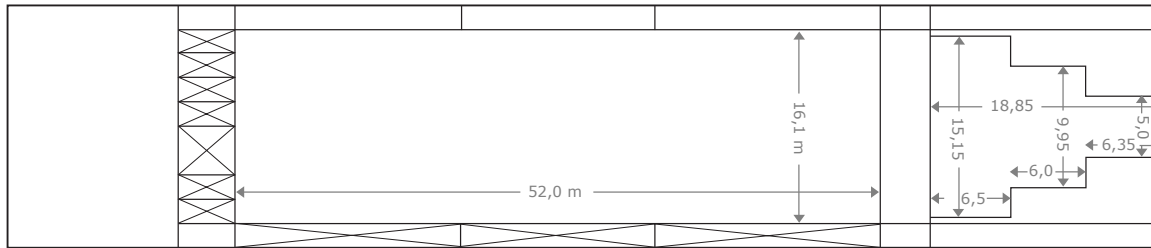


HOLD 1

HOLD 2



TWEEN DECK



WEATHER DECK

