

# M.V. "COMBI LIFT TBN" - 6 NEWBUILDINGS

MV "COMBI LIFT TBN" : CALL SIGN: - SAT C NO - FAX NO - TEL NO - IMO  
DELIVERY: JUNE 2009/ SEPT 2009/ DEC 2009  
JUNE 2010/ SEPT 2010/ DEC 2010

OWNERS: K/S COMBI LIFT - 4220 KORSØR - DENMARK  
PORT OF REGISTRY: ST. JOHNS  
FLAG: ANTIGUA



## MAIN PARTICULARS :

### CLASS:

GL +100 A5 E3 MULTI-PURPOSE DRY CARGO SHIP  
EQUIPPED FOR CARRIAGE OF CONTAINERS  
STRENGTHENED FOR HEAVY CARGO  
NAV-O, BWM, ENVIROMENTAL PASSPORT  
+MC AUT E3, IW

### BUILDERS:

### REGISTER TONNAGE:

TYPE	INTERNATIONAL
GROSS	10.200
NET	3400

### DIMENSIONS:

LENGTH OVER ALL	133,00 M
LENGTH BETWEEN PP	122,85 M
BREADTH MOULDED	23,00 M
DESIGN DRAFT LOADED SUMMER	7,25 M

### DEAD WEIGHT CAPACITIES:

DEAD WEIGHT A.T.	10.000 MTS
------------------	------------

### CARGO HOLD:

BOXED – STEEL FLOORING – TWEEN DECK HOISTABLE IN 3  
DIFFERENT HEIGHTS (SEE DRAWING)

### CUBIC CAPACITIES IN HOLD:

TOTAL CUBIC CAPACITY	15.700 CBM
----------------------	------------

### CRANES:

2 ELECTRIC HYDRAULIC CRANES PORT SIDE 450 TS / 17,5 M & 250  
TS / 30 M COMBINABLE UP TO 900 TS

### DECK STRENGTH:

TANKTOP - STEEL	16,0 TS PER M2
TWEEN DECK - STEEL PONTOONS	4,5 TS PER M2
MAIN DECK - STEEL PONTOONS	2,5 TS PER M2

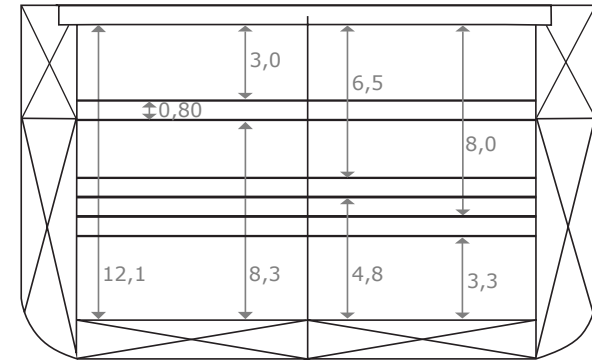
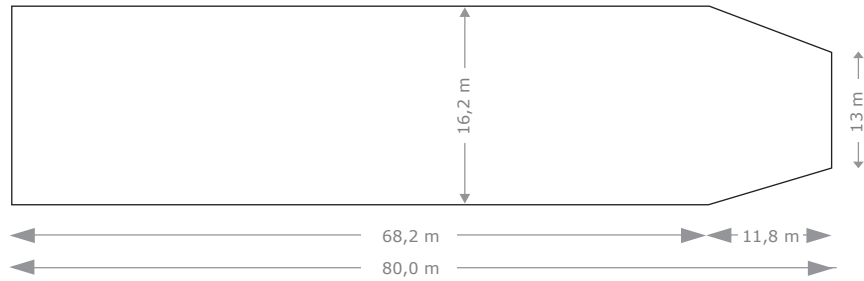
### SPEED AND CONSUMPTION:

16,2 KTS

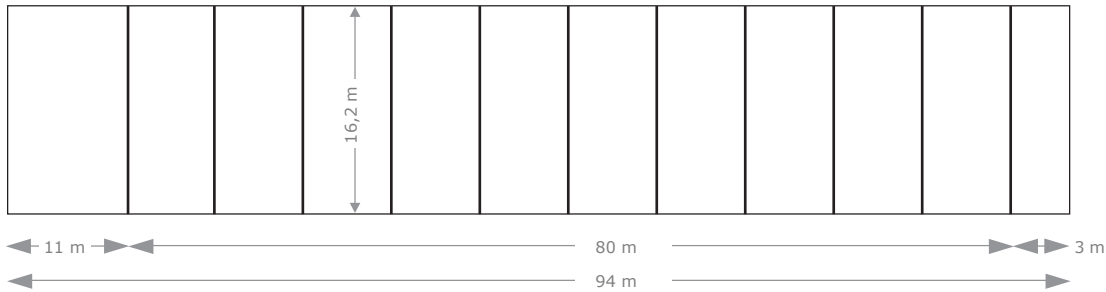
### TANK CAPACITIES:

FUELOIL	1.244 M3
MDO	125 M3
FRESH WATER	180 M3
BALLAST WATER	7.800 M3

### TANK TOP

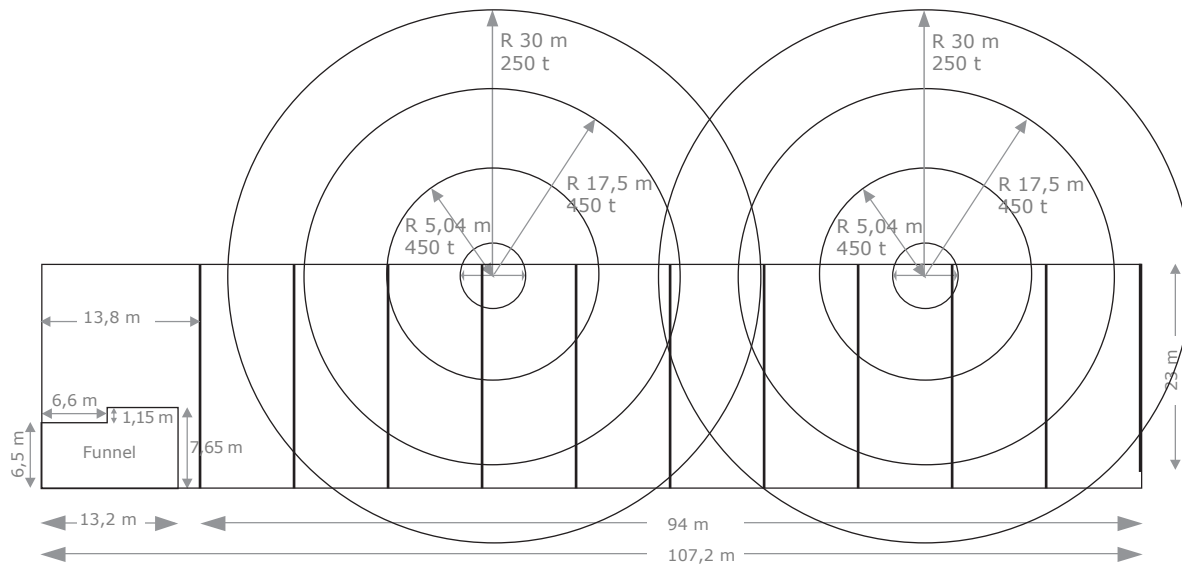


### HATCH OPENING/TWEEN DECK



Hatch opening/tween deck highest position 94x16,2, Tween deck middle and lowest position 80x16,2.

### WEATHER DECK



M.V. "COMBI LIFT TBN"