

FACT SHEET

MV "KORSOER"

CALL SIGN: DQUS - SAT C NO 421875410 - TEL NO 321875410 - FAX NO 321875411 - IMO NO. 9159933

OWNERS: T/C OWNERS K/S COMBI LIFT - 4220 KORSØR - DENMARK
 PORT OF REGISTRY: ST. JOHNS
 FLAG: ANTIGUA



MAIN PARTICULARS :

CLASS:

GL + 100 A5 E RO-RO VESSEL – STRENGTHENED FOR HEAVY CARGO - EQUIPPED FOR CARRIAGE OF CONTAINERS AND DANGEROUS GOODS – SOLAS II-2, REG. 54/MC E AUT.

BUILDERS:

TGS PENDIK SHIPYARD, TURKEY – 1999

REGISTER TONNAGE:

TYPE	INTERNATIONAL
GROSS	5801
NET	2714

DIMENSIONS:

LENGTH OVER ALL	100,90 M
LENGTH BETWEEN PP	94,60 M
BREADTH MOULDED	18,90 M
DRAFT FULLY LOADED SUMMER	6,90 M

DEAD WEIGHT CAPACITIES:

DEAD WEIGHT A.T.	5.600 MTS
------------------	-----------

CONTAINER CAPACITIES:

TOTAL CAPACITY 20' x 8' x 8'6"	600
HEREOF: IN CARGO HOLD	223
ON DECK	377
CAPACITY WITH AVERAGE 14 TS REEFER CONTAINERS	318
	30

STACKLOAD:

TANKTOP	96 TS EACH 20'	120 TS EACH 40'
DECK	40 TS EACH 20'	60 TS EACH 40'
HATCH	50 TS EACH 20'	80 TS EACH 40'

CARGO HOLD:

BOXED - STEEL FLOORING
 20 AIR CHANGES PER HOUR IN PORT
 10 AIR CHANGES PER HOUR AT SEA

HATCHES:

1 HATCH WEATHERDECK	70,3 M X 15,2 M
1 HATCH TWEENDECK	51,3 M X 15,2 M

CUBIC CAPACITIES IN HOLDS:

WITH TWEEN-DECK HATCH COVERS	10.600 CBM
------------------------------	------------

CRANES:

2 ELECTRO HYDRAULIC CRANES PORT SIDE 60 TS / 13 M & 40 TS / 26,5 M COMBINABLE UP TO 120 TS

DECK STRENGTH:

TANKTOP - STEEL	10,0 TS PER M2
TWEEN DECK - STEEL PONTOONS	3,0 TS PER M2
MAIN DECK - STEEL PONTOONS	2,45 TS PER M2

SPEED AND CONSUMPTION:

14,0 KNOTS ON ABT 19 TS IFO 380
 NO GASOIL AT SEA

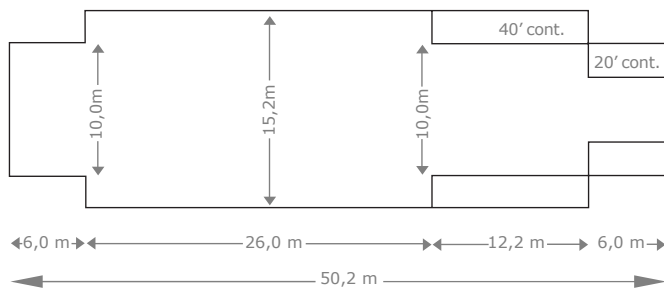
TANK CAPACITIES:

FUELOIL	ABT. 547 TS
FRESH WATER	123 TS
BALLAST WATER	2282 TS

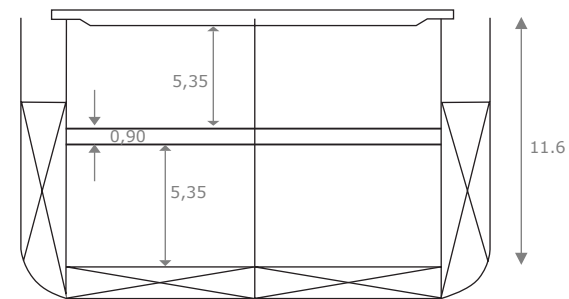
ENGINES:

MAIN ENGINE:	1 MAN B&W 9L 32/40
AUX. ENGINES:	2 MAN B&W 4- STROKE DIESEL ENGINES

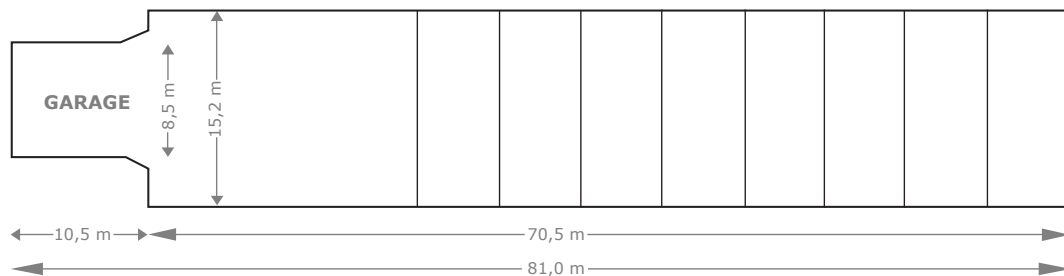
LOWER HOLD



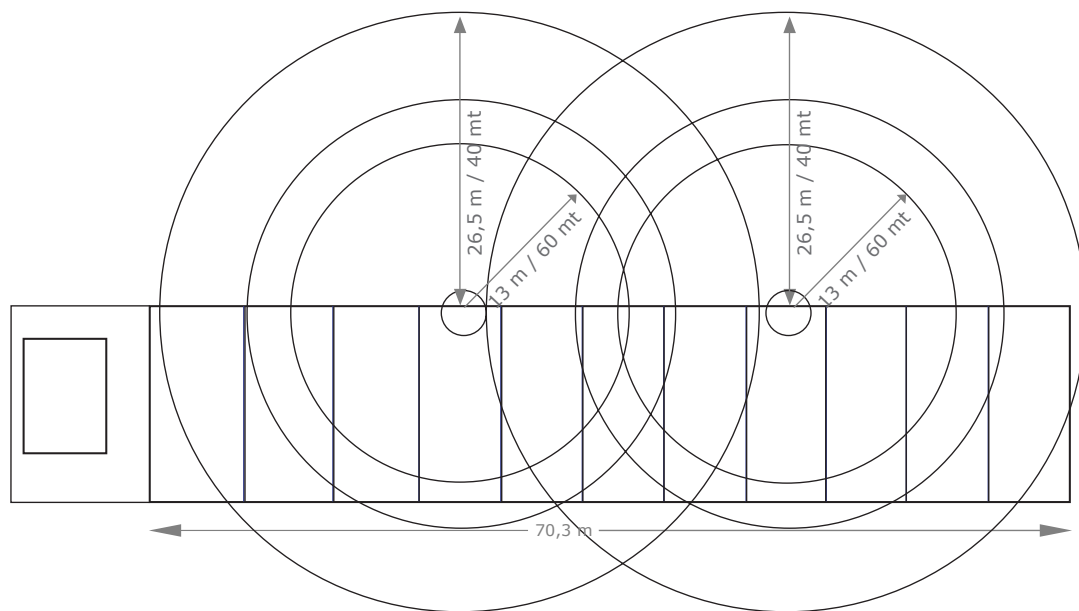
HOLD 1



TWEEN DECK



WEATHER DECK



MS "KORSOER"