

MS "PEGASUS" FACT SHEET

CALLSIGN: PJNN - IMO 8108133 - SAT C NO 430 671 610 - GSM: +45 29678631
 TEL: +870 761 122 744 - FAX : +870 761 122 746 - EMAIL: PEGASUSJP@SKYFILE.COM
 MANAGING OWNERS: J. POULSEN SHIPPING A/S - BATTERIVEJ 7 - KORSØR - DENMARK
 PORT OF REGISTRY: WILLEMSTAD
 FLAG: DUTCH ANTILLES



MAIN PARTICULARS :

CLASS:

BUREAU VERITAS I 3/3 E, CARGO SHIP, DEEP SEE, ICE III

BUILDERS:

SØBY MOTORFABRIK & STAALSKIBSVÆRFT A/S 6/1981

REGISTER TONNAGE:

TYPE	INTERNATIONAL	SUEZ	PANAMA
GROSS	1161		
NET	452		

DIMENSIONS:

LENGTH OVER ALL	62,90 M
LENGTH BETWEEN PP	57,00 M
BREADTH MOULDED	11,20 M
DEPTH TO MAIN DECK	6,20 M
DEPTH TO TWEEN DECK	3M
DRAFT FULLY LOADED SUMMER	14,3
FURTHER	

DEAD WEIGHT CAPACITIES:

DEAD WEIGHT A.T.	1260 MT
DEAD WEIGHT C.C. EST. I	1100 MT

CONTAINER CAPACITIES:

TOTAL CAPACITY 20' x 8' x 8'6"	46
HEREOF: IN CARGO HOLD	32
ON DECK	14
REEFER CONTAINERS	NONE

STACKLOAD:

TANKTOP	60 MT EACH 20'
DECK	20 MT EACH 20'

CARGO HOLDS:

FITTED AND CERTIFIED FOR IMO 1 CARGO
 WOODEN FLOORING
 30 AIR CHANGES PER HOUR BASIS EMPTY HOLDS
 FITTED WITH SMOKE DETECTORS AND CO₂
 HOLDS CAN BE DIVIDED INTO 4 SEPARATE COMPARTMENTS

CUBIC CAPACITIES IN HOLDS:

VESSEL HAS 2 ERECTABLE STEEL BULKHEADS
 CUBIC GIVEN BELOW IS WITH BULKHEAD ERECTED

	CBTS . GRAIN	CBFT . BALE
LOWER HOLD 1	4300	3.420
LOWER HOLD 2	9.070	7.240
LOWER HOLD 3	18.230	16.840
UPPER HOLD1	8.740	8.120
UPPER HOLD 2	13.840	12.990
UPPER HOLD 3	28.910	27.070
TOTAL	83.160	75.680

FURTHER 2 SPECIAL LOCKERS OF 860 AND 1180 CBFT BALE.

WINCHES / DERRICKS:

1 DERRICKS OF 11 MT TOPPING AND SLEEWING AFT.
 1 DERRICKS OF 5 MT TOPPING AND SLEEWING FORE

DECK STRENGTH:

TANKTOP - HARDWOOD	5,6 MT PER M ²
TWEEN DECK - WOODEN	2,8 MT PER M ²
MAIN DECK - MAC GREGRO STEEL	1,5 MT PER M ²

SPEED AND CONSUMPTION:

9.5 KNOTS ON BT 3.5 MT GO INCL. SHAFTGEN.
 IN PORT IDLE 0,5 MT
 IN PORT WORKING WITH WINCHES 1,0 MT

TANK CAPACITIES:

FUELOIL	180 TS
FRESH WATER	36 TS
BALLAST WATER	376 TS

ENGINES:

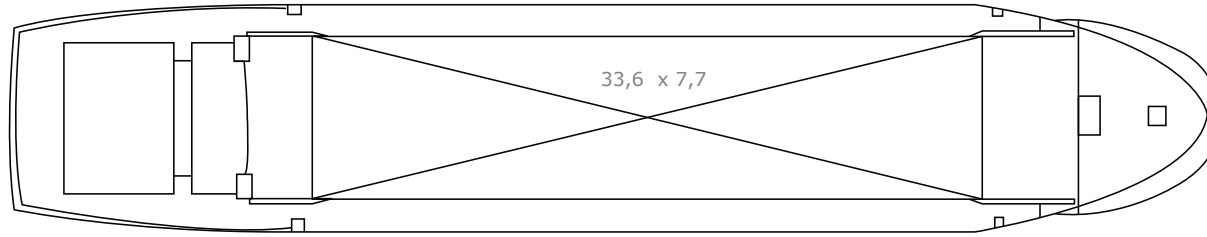
MAIN ENGINE:	B&W ALPHA 6T 23/L - KVO 930 BHP
AUX. ENGINES:	2 MERCEDES OM 401 OF 125 BHP
	1 MERCEDES OM 352 OF 75 BHP
SHAFTGEN.:	1 OF 45 KVA

BRIDGE EQUIPMENT:

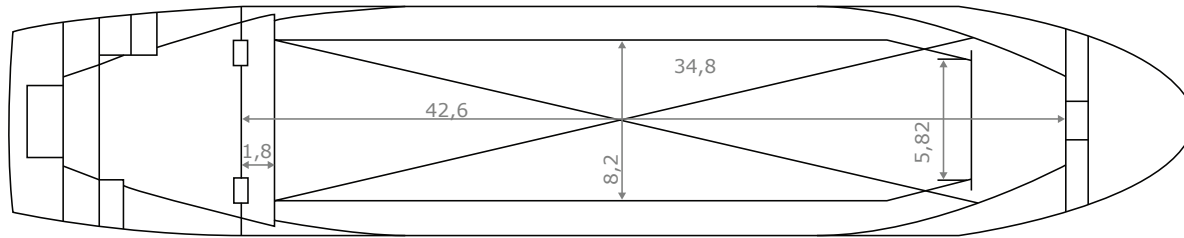
2 RADARS FURUNO FR-810-DR, SAT. NAVIGATOR + GPS, 400 WATT SHORT WAVE RADIO
 TRP 5000, 2 VHF - GYRO SPERRY SR 120 + AUTOPILOT

ALL PARTICULARS BELIEVED TO BE CORRECT, BUT NOT GUARANTEED

MAIN DECK



TWEEN DECK



TANK TOP

